



The Lights, West Street, Andover,
Hampshire SP10 1AH

01264 368 368

www.thelights.org.uk



The Lights has two performance areas, the Auditorium and the Arena, both with their own stage, lighting & sound equipment. On the following pages you'll find a wealth of information about The Lights, how to get here, where to park and unload, access and get ins as well as most of the technical information that you might require.

Should you not find the information you are seeking please contact Ricky da Fonseca, the Technical Officer on:

Email – rdafonseca@testvalley.org.uk
Phone – 01264 368832

Directions and Parking

Once in Andover follow the Theatre road signs. To get to the Stage Door drive down Western Avenue and then turn left into West Street.



This is a one way street and the road divides after roughly 100m. Take the first left immediately after the Leisure Centre and follow the small lane and at the end turn left and the Theatre is ahead of you. The Stage Door is on the right hand side of the Theatre. To gain access, ring the white doorbell on the right-hand side of the Stage Door.

Call us if you are having problems finding us.

Postcode for Stage Door SP10 1QP
What3Words [romance.tech.heaven](https://www.what3words.com/romance.tech.heaven)



music

theatre

comedy

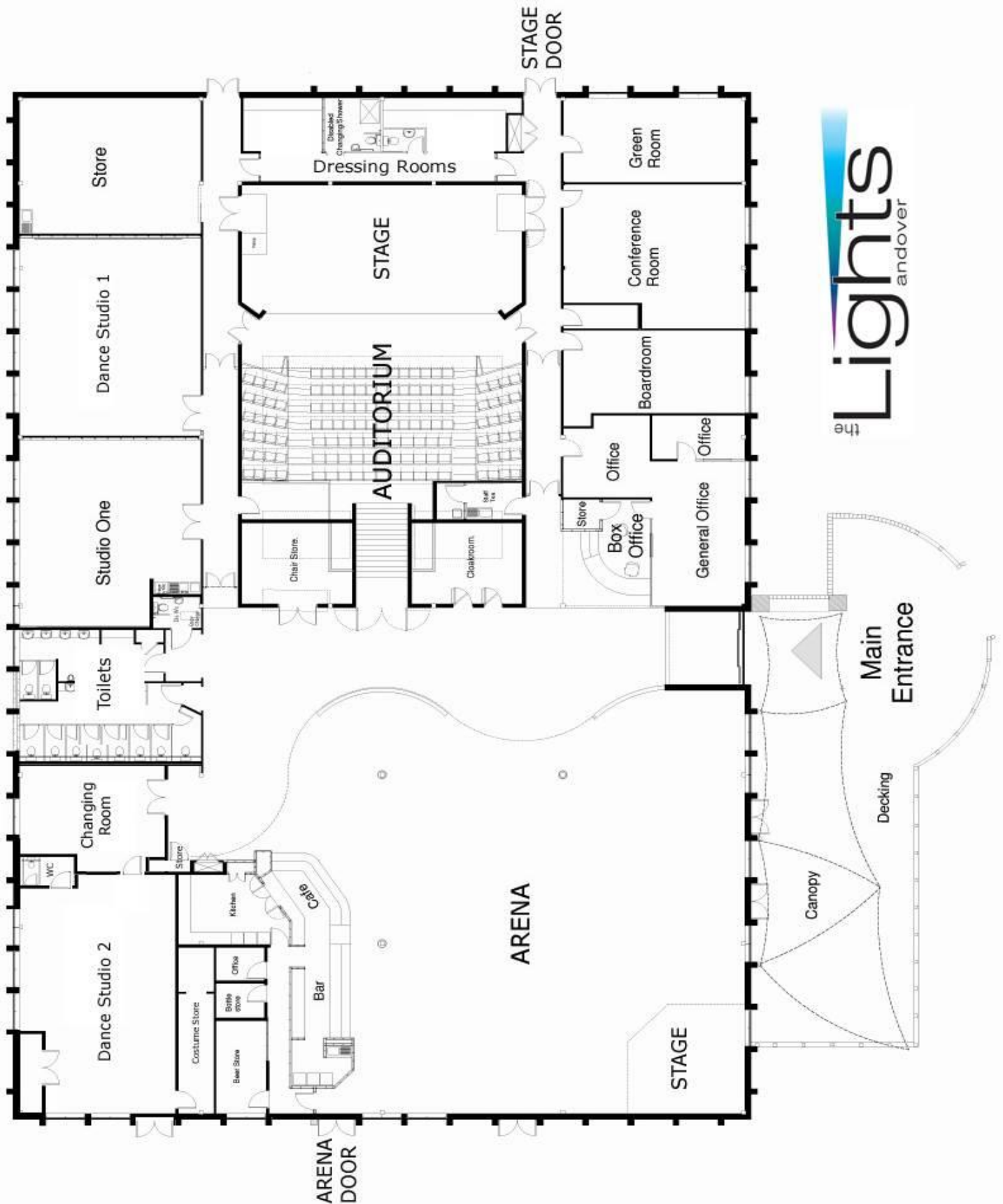
dance

education

conferencing

The Lights Andover is owned and managed by Test Valley Borough Council

The Lights Plan view



Auditorium Specifications

The Auditorium is in the centre of the building and can be accessed via three sets of double doors (Main Entrance, Stage Left & Right). There is a Dressing Room and a Green Room behind the Stage.

Stage

The Stage is accessed via the Stage Door (at ground level) and a set of acoustic double doors which are each 2m high 1.5m wide. The stage itself is 13m wide (internal walls), 6.4m deep & 0.18m high. The Lighting Grid has eight electric winched bars, four for lighting, four for scenery (used mostly for lighting) (2 up stage, 1 stage left and 1 stage right). There is also a 6m x 4m projection screen. The back wall is white and has black tabs directly in front of it. There are two further sets of black tabs and three sets of black legs. The blue house tabs are hand winched from stage right. Power on stage is one 63A SPNE and one 63A TPNE, both located in the Plant Room, stage right.

Seating

The Auditorium seats 249 (of which 33 are 'Pullman' style larger seats). There is ground floor access for up to eight wheelchair users. The seating is fixed and single rake. The Control Box is situated to the rear of the Auditorium.

Lighting

The house rig can be configured to suit most performances, but should you require an unusual lighting set-up please inform us well in advance of arrival. A basic, simple lighting grid plan is available upon request.

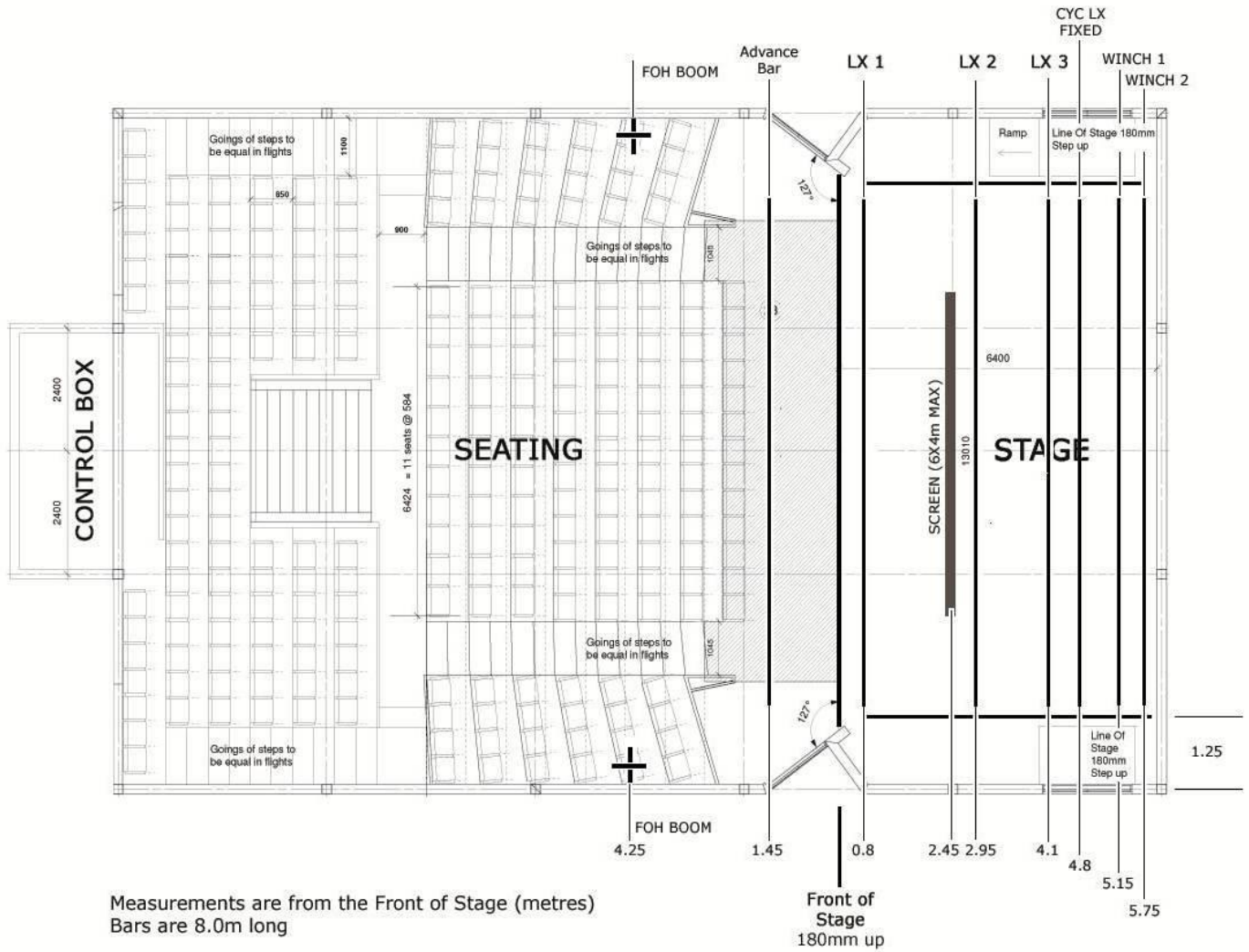
Dimming:	4 x Chilli Pro 24-10i 2 x CCT Regal 6 pack	(96 channels) (12 channels, mobile)
Lighting Desk:	ETC Element 2	
Lanterns:	26 x ETC Source 4 Fresnel 12 x ETC Source 4 16-30 <i>(permanently rigged on Bridge 2)</i> 10 x ETC Source 4 Jr 8 x Strand Patt 743 (1kw Fresnel) 4 x Strand Harmony PC (1kw Prism-Convex) 5 x Strand Minim 23 66 x Par 64 Black long nose (1kw, CP62 and CP61) <i>(10 permanently rigged on FoH booms)</i> 8 x Par 64 Silver short nose, double yoke (1kw, CP61) 2 x Par 64 Silver short nose, single yoke (1kw, CP62) 1 x Par 64 black short nose, double yoke (1kw, CP61) 4 x Coda 4 CYC LX 6 x CCT Freedom PC's 2 x CCT Freedom F's 6 x CCT Freedom 15-32 (no shutters) <i>(permanently rigged on Bridge 2)</i> 2 x CCT Freedom 20-40 (no shutters) 2 x CCT Freedom 28-58 (no shutters) 4 x CCT Minuette Condenser (no shutters) 8 x CCT 500w Floods 6 x ADB Profile 18-38 6 x Stairville LED Par56 1 x Mirror Ball (50cm inc motor) 1 x LEDJ Starcloth (cw)	

Sound

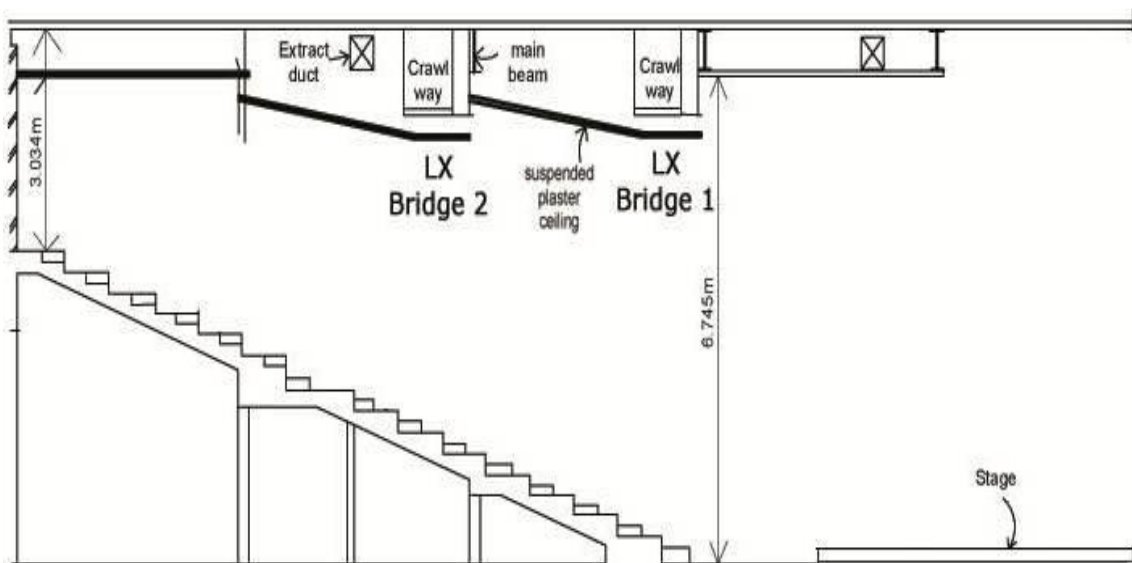
Sound Desk:	Allen & Heath GL2400-32
Amplifiers:	4 x QSC RMX 2450 2 x QSC RMX 5050
Digital Signal Processor:	1 x QSC 322ua Processor
Speakers:	10 x QSC WL2082-I line array modules 2 x EV ELX118 Subs
Infills:	2 x EV FLX15
Monitors:	4 x Studio Spares 15" Wedges
Tie-lines:	2 x 12 tie-line boxes
Playback:	1 x Denon DN300Z 1 x Numark CDN 22 1 x Tascam MD350
Microphones:	8 x Shure SM58 microphones 4 x Shure Beta 57A 3 x Shure SM57 1 x Shure Beta 52A 3 x Crown PCC160 2 x Clock Audio C300 1 x Canford Audio C430XB 1 x AKG CGN 99C/S 1 x T-Bone drum kit mic set
Stands:	7 x Tall boom 4 x Upright Clutch 1 x Tall straight 7 x Short boom 2 x Table straight
DI Boxes:	5 x EMO E520 3 x Millennium DIP 2 x DAP Audio StageCube
Radio Microphone:	4 x Sennheiser EW100 G3 radio mic package, inc 4 x Handheld 4 x Beltpack Variety of lapel and headset mics
Comms:	1 x Tech Pro Master Station 4 x Belt Pack & Headsets



Auditorium and Stage Plan with Stage Bar Positions



Auditorium Cross Section



Arena Specifications

The Arena is perfect for large events, comedy, themed exhibitions, or when the lights are changed, a place to relax in a more intimate, cabaret style environment.

The Arena can cater for 150-200 seated and roughly 350 standing but can be configured to suit your requirements.

Two sets of French doors and full-length windows run along the south facing side, exiting directly onto the decking area (175m squared), which is covered by a large canopy. Adjacent to the Arena is the Box Office, Foyer and Toilets. The floor is blue carpet, with a vinyl surface under the pyramid roof light. The Arena also contains The Atrium Café Bar, serving a variety of snacks during the day and before each performance. To separate the Arena from the foyer there is a 'moving' wall allowing for more privacy for private functions.

The Get-in is across the outdoor decking via double doors 5m from the stage at ground level, with nearby parking.

Stage

The Stage is 5m wide x 5m deep x 0.5m high, with steps (which are portable). There is scope for expansion by 1 metre around, but this needs to be confirmed at least two weeks in advance. There is a selection of 13A sockets and a 63A TPNE located at stage left.

Seating

The Arena seating is comprised of 50 modular chairs and tables which can be arranged to suit your event or removed totally to allow for more standing space.

Lighting

There is a 6m Internally Wired Bar in front of the Stage, as well as standard 48mm bars around the stage.

Dimming:	Anytronics 8way
Lighting Desk:	Zero88 Leap Frog
Lanterns:	10 x Silver Par 64 (CP88 500w) 2 x Minulette Fresnel 6 x Generic LED Par 2 x Generic LED Flood

Behind the stage and around the Arena are eight Led wall washers as well as dimmable house lights. The Pyramid also has perimeter lighting.

Sound

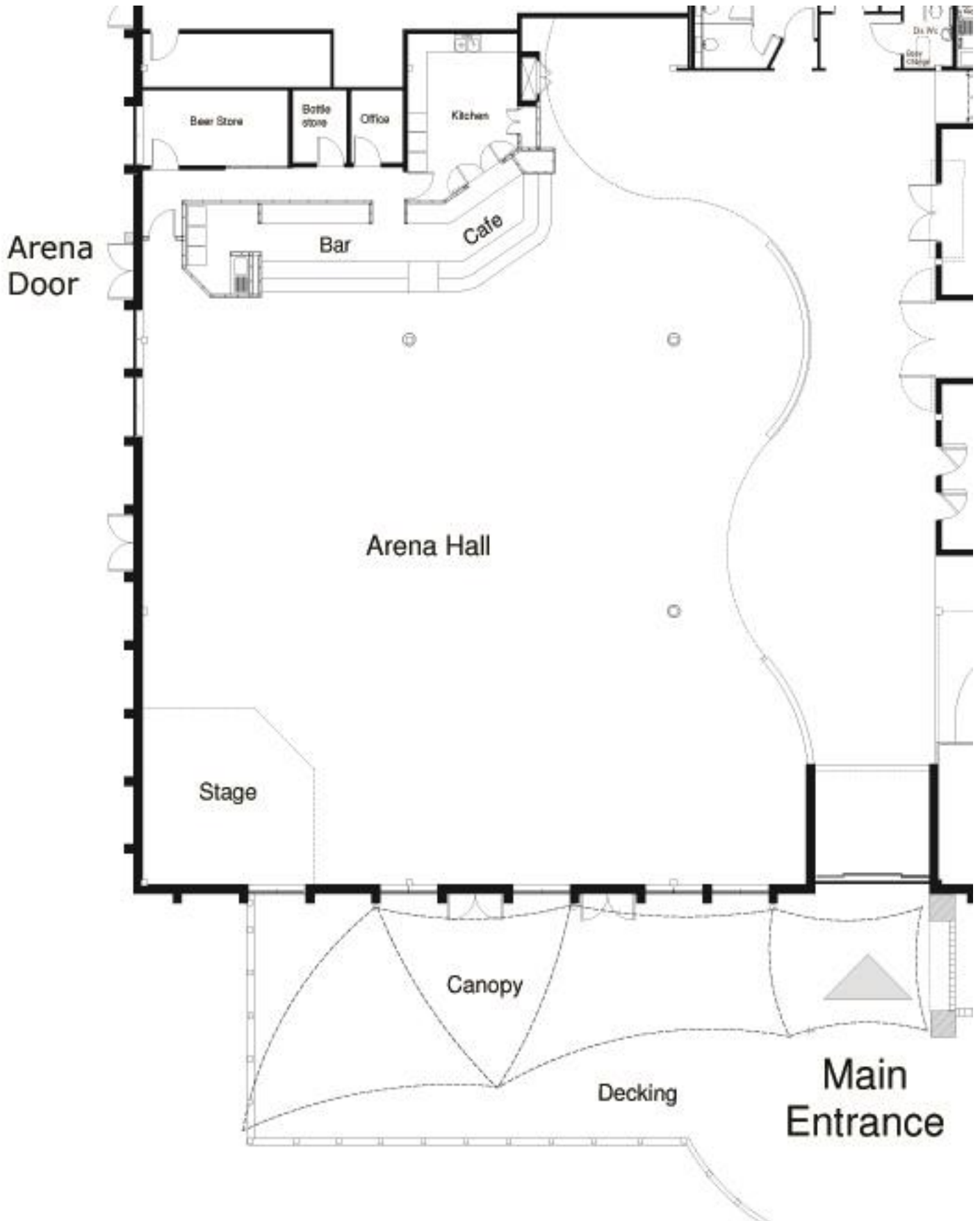
There are two sources of audio in the Arena, a background music system separate from the main stage system which comprises of -

Sound Desk:	Soundcraft 24/32 LX-7ii
Amplifiers:	1 x QSC RMX 1850 2 x QSC RMX 2450
Speakers:	2 x JBL JRX125 1 x JBL JRX118
Monitors:	3 x JBL EON 1500 speakers
Microphones and stands:	equipment shared with auditorium



Arena and Stage Plan View

The Arena measures 18m from the Bar to the Stage wall and 20m across.



Dressing Room / Green Room / Stage Door / Equipment

Behind the Auditorium Stage are the Dressing Room and the Green Room.

The Dressing Room has two separate ends with lit mirrors and dressing tables separated by a fully DDA compliant Toilet/Shower room and a second Toilet. An iron and ironing board as well as three clothes rails are also provided. Seating is provided for 12.

The Dressing Room doors allow for use as a stage crossover with access to Stage Left or Stage Right.

In the Green Room we have comfortable seating around a coffee table, with tables and chairs available. Also provided are a fridge, microwave and kettle, as well as cutlery and crockery for your use.

There is an audio relay system to both the Dressing Room and Green Room from the Stage.

There is reserved parking at Stage Door for up to six cars / four vans which is under 24 hour CCTV coverage for security.



Superfast Wi-Fi (30-36Mbs) is available throughout the Venue, search for **The Lights** and just connect, there is no password.



A Yamaha C7 Piano is available to hire if required but we will need notification of this several weeks before your visit to organise tuning.

Other items which are available include a Mirrorball, an LED Starcloth, a Haze machine and a Projector and screen. Please enquire on the availability of these during your visit.

Please note that the Venue is **NON-SMOKING** throughout including E-Cigarettes.

Should you require any other equipment not listed on these pages please inform our Technical Officer Ricky da Fonseca in advance on 01264 368832 or email rdafonseca@testvalley.gov.uk

